

**SYM**

# HUSKY 150

BEYOND THE FRONTIER



**ABS**

**TCS**  
Traction Control System

## ADVENTURE COMPANION

Husky150: A versatile and stylish scooter adept for all adventures, offering comfort and excitement on any route for riders of any skill level.



**ENGINE 150CC, SINGLE CYLINDER, 4-STROKE, 4-VALVE, LIQUID-COOLED**  
Can produce maximum power 10.8kW at 8,000rpm and maximum torque 14.5Nm at 6,000rpm.



**TRACTION CONTROL SYSTEM (TCS)**  
Provides better traction, reduces tyre slide, and increases stability.



**DUAL CHANNEL ANTI-LOCK BRAKING SYSTEM (ABS)**  
Achieve optimal control and braking force.



**SINGLE SWINGARM**  
Streamlined design for improved handling and maintenance of the scooter.



EBONY BLACK



PURE WHITE



WOLF GREY  
(SPECIAL EDITION)



MATTE GREEN  
(SPECIAL EDITION)

### ENGINE

Engine Type	Single Cylinder, 4-stroke, 4-valve, Liquid-cooled
Displacement (cc)	150
Bore x Stroke (mm)	57.4 x 57.8
Compression Ratio	11.2:1
Maximum Power	10.8kW @ 8,000rpm
Maximum Torque	14.5Nm @ 6,000rpm
Transmission	CVT
Ignition	Transistorized Coil Ignition
Starting System	Electric
Fuel System	EFI

### CHASSIS

Front Suspension	Telescopic Fork
Rear Suspension	Unit Swing
Front Brake	260mm Disc Brake
Rear Brake	223 Single Disc
Front Tyre	Tubeless 120/70-R13
Rear Tyre	Tubeless 130/70-R13
ABS	Dual Channel
Battery	12V8Ah

### DIMENSIONS

Length x Width x Height (mm)	1,980 x 780 x 1,225
Seat Height (mm)	785
Wheelbase (mm)	1,390
Ground Clearance (mm)	112
Curb Weight (kg)	153
Fuel Tank Capacity (L)	15

# HUSKY150



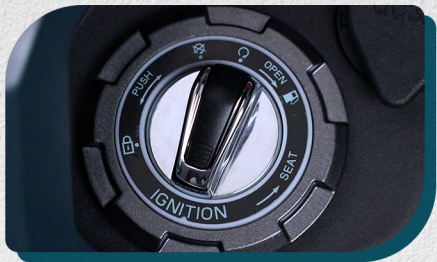
### TELESCOPIC FRONT FORKS

Absorb shock, improve handling, stability, and safety.



### SINGLE-SIDED REAR SUSPENSION

Enhanced manoeuvrability, improved stability, and a smoother ride.



### KEYLESS SYSTEM

Boosts the dependability, stylish style, security, and convenience of scooters.



### SIDE STAND SAFETY SWITCH

To keep the rider from riding off with the sidestand down.



### USB PORT CHARGER

Charges devices rapidly, ensuring on-the-go convenience.



### FRONT STORAGE POCKET

Allows the riders to put their phones, wallets, or gadgets inside.



### DIGITAL METER DISPLAY

Clear instrument info provides optimal support for adventurous riders.



### LARGE FUEL TANK CAPACITY 15-LITRE

Reduces the frequency of visiting a gas station.



Distributed by



**MFORCE BIKE HOLDINGS SDN. BHD.(751410-H)**

1485, Jalan Seruling, Kawasan Perindustrian Valdor, 14200 Sungai Jawi, Pulau Pinang, Malaysia.

Tel: 604-545 2222 | Fax: 604-545 2288 | Email: help@mforce.my



# HUSKY150

## COMFORT IN EVERY RIDE

Discover comfort in every ride, crafted with seamless design and exquisite aesthetics, ensuring a journey that's both stylish and serene.



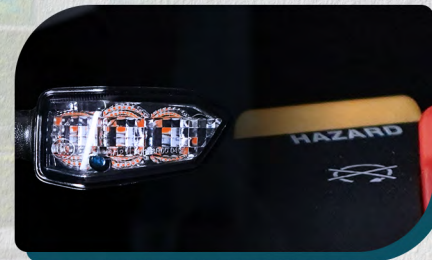
### BRIGHT AND STYLISH LED HEADLAMPS

Greatly improves the riding safety.



### HAMMER-SHAPE LED TAIL LIGHT

Captivating design showcases power with adventurous rear aesthetics.



### HAZARD LIGHT + EMERGENCY SIGNAL BUTTON

Safety, visibility and effective warning for accident prevention.



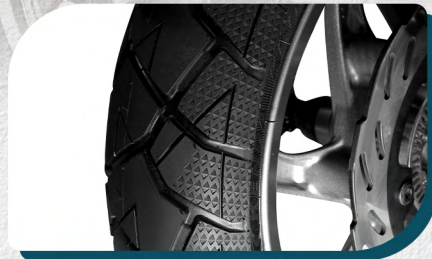
### UNDER-SEAT STORAGE COMPARTMENT 22-LITRE

Efficiently secures, organizes and optimizes access to stored items.



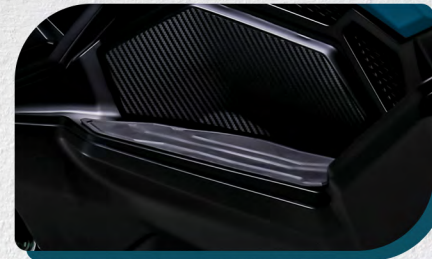
### STYLISH WINDSHIELD

Improves the smooth design, visibility, aerodynamics, and safety of scooters.



### ON/OFF ROAD DUAL PURPOSE TIRES

Offer traction, stability, durability, and versatility for safety.



### EXTENDED FOOT SPACE

Comfort-focused design reduces fatigue for long-distance riders.



### ERGONOMIC RIDING POSITION

Optimises the pillion's and rider's comfort.

